

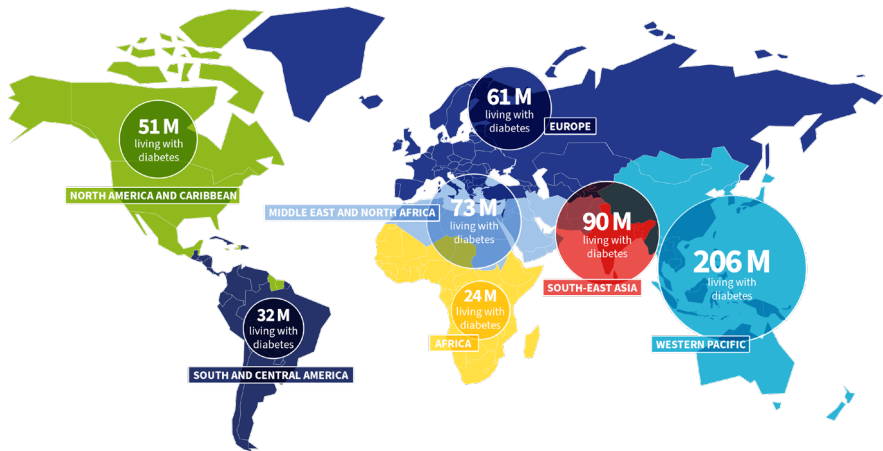


EASD Membership

**BE PART OF OUR INTERNATIONAL
DIABETES EXPERT NETWORK**



BECOME A MEMBER OF EASD



Source: IDF Diabetes Atlas 2021, 10th edition

Diabetes is on the rise in countries all over the world. Today, 537 million people worldwide are estimated to be affected by diabetes and this number is even projected to increase to some 783 million in 2045.

In the light of these alarming figures diabetes is undoubtedly one of the most challenging health problems of the 21st century.

EASD is one of the largest networks for diabetologists worldwide guided by its mission to promote excellence in diabetes care through research, networking and education.

EASD Membership is open to scientists, physicians, students, postdocs and fellows, allied health professionals and nurses from all over the world, who are interested in the field of diabetes and related diseases

Become a member of EASD and join our powerful global network committed to tackle and eventually eradicate diabetes!

MEMBERSHIP BENEFITS AT A GLANCE

- Have **full online access to our journal Diabetologia** which publishes original clinical and experimental research articles in the field of diabetes
- Receive a **discounted registration fee** for the EASD Annual Meeting
- Apply for a wide range of **EFSD Grants and Fellowships** in all areas of diabetes research
- Be listed and have free access to the **EASD Member Directory** - the who's who of diabetes
- Receive **monthly newsletters** with the most up-to-date information in the world of diabetes
- Receive a **membership certificate** and have free access to the secured online member area
- Support EASD and serve as an **Abstract Reviewer** or as a **Chairperson** at our Annual Meeting
- Have access to the **EASD Member Lounge** during the Annual Meeting - the place to meet your peers
- Actively **shape the future of EASD** as a member
- Be part of **various committees**
- Get nominated and nominate candidates for **prestigious prizes** to recognise excellence in diabetes science
- Have access to all activities of the **EASD Early Career Academy**, offering training and mentoring opportunities for early career clinicians and researchers

APPLICATION AND RENEWAL

- Go to easd.org and log in to [MyEASD](#) with your existing account details or create your personal account first.
- Once logged in to [MyEASD](#), please go to Membership and start the EASD membership application or renewal process
- Choose your membership type and complete the application process
- Within five business days your application or renewal will be reviewed and you will be contacted by an EASD representative

MEMBERSHIP FEES

| TYPE | 1 YEAR | 2 YEARS | 3 YEARS | 4 YEARS |
|--|--------|---------|---------|---------|
| Standard | € 115 | € 220 | € 315 | € 400 |
| Postdoc / Fellow / Allied Health Professional / Nurse* | € 75 | € 140 | € 195 | € 240 |
| Student* / Emeritus** | € 40 | € 70 | € 100 | € 125 |

* Students, Postdocs, Fellows, Allied Health Professionals and Nurses who wish to be eligible for the reduced membership fee need to provide a letter of recommendation from a head of department or a member of EASD providing information concerning the scientific work.

** To apply for an Emeritus membership one must be at least 65 years of age and retired. Please contact the Membership Department at membership@easd.org for further information.



“Being a diabetologist, a clinical researcher is the perfect thing to do: the EASD combines the best of science and excellence in diabetes research. Join the EASD!”

Professor Miriam Cnop, Belgium

“Join EASD and you will become a member of the European diabetes family. This will allow you to gain knowledge about all aspects of the disease and follow the latest developments in diabetes research from both scientific as well as clinical practice. It’s really worth it!”

Professor Krzysztof Strojek, Poland



“I originally joined for professional reasons, but I have since expanded my professional network and joined a community where a lot of diabetes research, care and education will be made.”

Professor Dario Rahelić, Croatia

*...er and a basic researcher, becoming a member of the EASD was and is the
...se different facets in its activities in order to promote the best clinical care
...he international diabetes community!”*

*...s way, you can easily improve your
...in the world of diabetes available*



*...s but quickly realised that EASD offers much more. Through EASD I have
...ned a community of passionate peers that is not just shaping the future
...ut also working to ensure that, one day, a life-changing breakthrough*

ABOUT EASD

Our Mission

We promote excellence in diabetes care through research, networking and education.

The **European Association for the Study of Diabetes e.V. (EASD)** is a membership-based academic non-profit organization. It was founded in 1965 and its headquarters is based in Duesseldorf, Germany.

EASD is a networks for diabetologists with active members from all over the world. Membership is open to scientists, physicians, students, postdocs and fellows, allied health professionals and nurses who are interested in the field of diabetes or related diseases.

The EASD Annual Meeting is one of the largest diabetes conferences in the world, attracting thousands of delegates each year. The scientific programme includes hundreds of talks, presentations and discussions on the latest results from basic and clinical diabetes research.

To stimulate diabetes research in Europe, EASD founded the European Foundation for the Study of Diabetes (EFSD) in 2000. EFSD offers support in all areas of diabetes research through a wide range of joint and stand-alone initiatives. Funding streams are available throughout the year and since inception, EFSD has committed over €120 million to diabetes research in Europe.

EASD is also a leading player in postgraduate education having trained thousands of healthcare professionals through dedicated training courses and online education activities. Our award winning e-Learning platform, offers free access to courses developed with world-class experts in diabetes research and care.

The Association is actively involved in producing and endorsing statements and guidelines translating the latest results from diabetes re-

search into best practices in diabetes management. These statements and guidelines have proven to have significant visibility and substantial impact on health care, particularly when concerning statements on treatment and diagnostic criteria.

By creating the Early Career Academy, EASD has increased its commitment to support, train, mentor, and create opportunities for scientists, clinicians, and students who are at an early or intermediate stage of their career.

The Association awards several major prizes annually to honour distinguished diabetes researchers and clinicians. Prize recipients deliver an award lecture at the EASD Annual Meeting.

EASD is also the publisher of *Diabetologia*, a major monthly international diabetes journal. The journal publishes original clinical, translational and experimental research on all aspects of diabetes and related subjects.

For more information about EASD, please visit: www.easd.org.

CONTACT INFORMATION

European Association for the Study of Diabetes (EASD) e.V.

Rheindorfer Weg 3 | 40591 Düsseldorf | Germany

Phone: +49 211 758 469 0 | Fax: +49 211 758 469 29

Email: membership@easd.org

VAT ID: DE272039655

Registration Number: VR 7031 | Court: Amtsgericht Düsseldorf

